



LW4144EN



EASY

knitting

Designed by Nancy J. Thomas

What you will need:

RED HEART® Soft: 1 ball each
00001 White A, 00006 Marine B,
00004 Winered C.

Knitting Needles: 4.5mm [US 7].

30.5 x 40.5 cm [12" x 16"] pillow
form, stitch markers, yarn needle.

TENSION/GAUGE: 18 sts = 10 cm
[4"]; 24 rows = 10 cm [4"] in St
st. CHECK YOUR TENSION/GAUGE.
Use any size needle to obtain the
tension/gauge.



RED HEART® Soft®,
Art. 9809670 solid
colours available in
100 g (3.5 oz), 167 m
(182 yd) balls



Union Jack Pillow

Knit a throw pillow in the classic style of the Union Jack using intarsia technique as you follow the charted design. The back is worked in simple horizontal stripes.

Pillow measures 30.5 cm [12"] x 40.5 cm [16"].

Special Technique

Intarsia = Work chart sts in colour specified, leaving yarns not in use hanging in back until you work back to that area. Twist yarns around each other at colour changes to prevent holes.

Notes

1. Chart rows are worked from bottom to top in same way piece grows. Read sts of odd-numbered (right side) Chart rows from right to left, and sts of even-numbered (wrong side) Chart rows from left to right.
2. Intarsia technique is used throughout to work colours.
3. Roll separate small balls of colours to work each area of chart, joining more yarn as necessary.

PILLOW FRONT

With **A**, cast on 78 sts. Work St st for 4 rows.

Next row (Right Side): K3, place marker, work Row 1 of Chart, place marker, join second ball of **A**, k3.

Continue in St st and intarsia, working first and last 3 sts with **A** and sts between markers in 72-row Chart pattern.

With **A**, work 3 rows St st; cast off.

PILLOW BACK

With **A**, cast on 78 sts. Work colours in St st as follows:

Rows 1-4: Colour **A**.

Rows 5-16: Colour **B**.

Rows 17-19: Colour **A**.

Rows 20-31: Colour **B**.

Rows 32-35: Colour **A**.

Rows 36-45: Colour **C**.

Rows 46-79: Repeat Rows 1-34.

Cast off.

FINISHING

Weave in ends. Sew Pillow Front to Back along 3 sides, matching **C** stripes. Insert pillow form; sew remaining side closed.

ABBREVIATIONS

A, B, C = Colour A, B, C; **k** = knit; **p** = purl;
st(s) = stitch(es); **St st** = Stockinette Stitch;
[] = work directions in brackets the number of times specified; * = repeat whatever follows the * as indicated.

See chart on next page...



Please Note: Print this pattern using Landscape Orientation.

Find more ideas & inspiration: www.redheart.co.uk

©2014 Coats & Clark

RedHeart.co.uk

Page 1 of 2

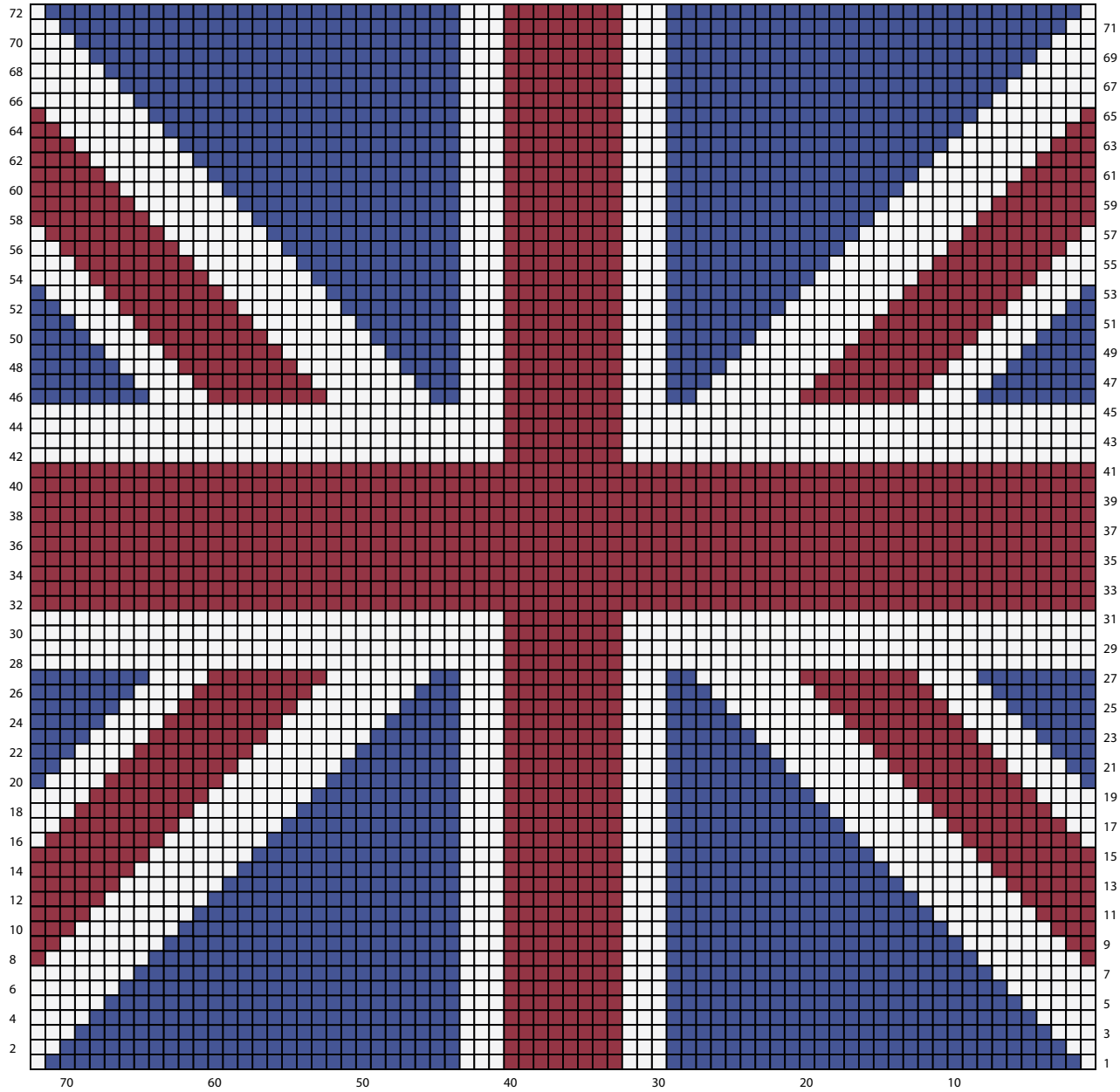





Chart Key

-  A
-  B
-  C



Please Note: Print this pattern using Landscape Orientation.

Find more ideas & inspiration: www.redheart.co.uk

©2014 Coats & Clark